



Chess Club Observer

Newsletter of the Springfield Chess Club

January-February 2001

Vol. 4, No. 1

Acting President: Tom Knoedler
Vice President: Gerald Bungardner
Secretary: Tom Knoedler
Treasurer: David Long

Editor: David Long
Box 7423
Springfield, Ill.
62791

Fund Raiser!

SCC vice president Gerald Bungardner has made a generous donation to the chess club: several boxes of chess books and magazines. These will be sold, with the proceeds going to the Springfield Chess Club.

Most books will cost \$1 for members. Certain small books will go for 75 cents. Magazines will cost 50 cents. (The price for non-members is \$1.50, \$1, and 75 cents, respectively.) Buy 5, get 1 (of equal or lesser value) free.

The books include several Informants, NIC yearbooks, assorted opening books, and others. The magazines, mostly *Chess Life*, go back to about 1995. (There were some older *Chess Life* issues, but they have already been sold!) A complete list of titles is available upon request.

At press time, more than sixty dollars has been raised for the club. Thanks Gerald!

Upcoming Tournament

Mark your calendars! The SCC's next tournament is scheduled for Saturday, February 17, 2001. It will be held at the Hampton Inn, corner of 31st St (Dirksen Pkwy) and Stevenson Drive.

Registration: 7:30-8:30. Rounds: 9, 12, 3, 6.

Entry fees: \$12 in advance, \$15 at the door (\$13 for SCC members), \$10 youth/scholastic.

More About December's Tournament

The December 9 tournament brought 24 players to Springfield. (Seven no-shows stayed home.) Richard Kujoth and Terry Trippe finished with 3-1/2 points, drawing each other in the last round. Complete results from the tournament can be found on page 5.

As promised, on page 2 is a game from the tournament. 1302-rated Fred Ohles's game against 1900-rated Richard Kujoth got off to a slow start, but he fought valiantly and seemed to have a strong attack going late in the middlegame. However, Kujoth came back to obtain connected outside passed pawns, and won.

White: Kujoth (1900)

Black: Ohles (1302)

Springfield, Ill.

December 2000 (Round 2)

Queen Pawn Opening [180]

1. P-Q4 N-KB3 2. P-K3 P-Q4 3. B-Q3 P-K3 4. N-Q2 P-B4 5. P-QB3
B-Q3 6. KN-B3 O-O 7. O-O (Diagram 1) The central break P-K4 is
coming. Black must develop. 7...P-KR3 (To keep pieces of KN4) 8. P-K4
QPxP 9. NxP NxN 10. BxN Q-B3 11. B-K3 N-R3 (Perhaps 11...N-Q2 or
11...R-Q1 is better.) 12. Q-Q2 R-N1 13. QR-Q1 R-Q1 14. Q-B2 P-QN3
15. N-K5! (Diagram 2) Threatens 16. N-B6. If 15...BxN? 16. PxB Q-K2
(...QxKP??? 17. RxR mate!) 17. RxRch QxR 18. R-Q1 +/- 15...B-N2
16. BxB RxB 17. Q-K4 R-B2 (The Black knight remains sidelined.)
18. P-KB4 Q-B4 19. Q-B3 (Although 19. QxQ PxB damages Black's pawn
structure, the White bishop is rather unhealthy.) 19...BxN 20. BPxB
QxQ 21. RxQ PxB 22. PxB (The trades have worked out to Black's
benefit. Note the weak light squares and the backward queen's pawn.)
22...R-Q4? (What's this doing here? The knight belongs on this square.
Better was 22...N-N5.) 23. QR-KB1 N-N5! (Finally!) 24. R-N3 K-R2
25. P-QR3 N-B7 =/+ (Diagram 3) The knight belatedly comes to the attack,
but the awkwardly placed Black rooks could easily become a burden.
26. R-B1 R-Q1? (Perhaps 26...R-B3, threatening 27...NxQP!) 27. B-Q2 NxQP
28. RxR N-K7ch 29. K-B2 NxR 30. B-K3 (Preserves the minor pieces and
keeps the rook off Q2. White is a pawn down, but not for long, as his
rook menaces pawns on both sides of the board.) 30...N-K5ch 31. K-K2
N-N4 32. RxRP R-Q4 33. P-KR4 N-K5 34. BxNP RxP +/- (White's bishop
is no longer bad, and he has traded his weak pawns. Soon the connected
passed pawns will start moving.) 35. B-Q4 R-KB4 36. P-QN4 P-B3
37. P-R4 N-Q3 38. P-N5 K-N3 39. P-N6 R-Q4 40. B-B2 R-K4ch
41. K-B1 R-K5 42. P-QR5 R-QN5 43. R-Q7 R-N8ch 44. K-K2 R-N7ch +
(Spite checks.) 45. K-B3 R-N6ch 46. K-K2 R-N7ch 47. K-Q3 N-B2
(...RxB 48. RxN) 48. K-B3 R-N4 (...RxB 49. P-R6 and it could! go!
all! the! way!) 49. P-R6 N-K4 50. R-QB7, Black resigns.

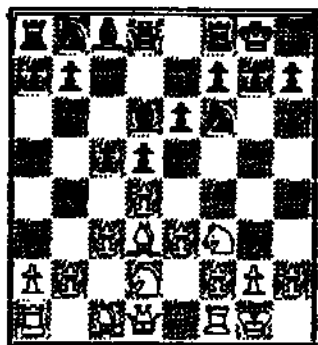


Diagram 1

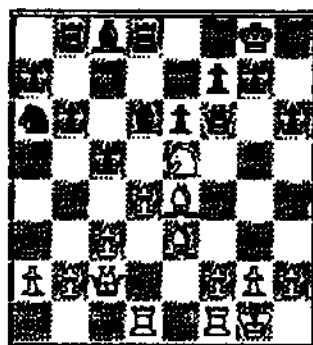


Diagram 2

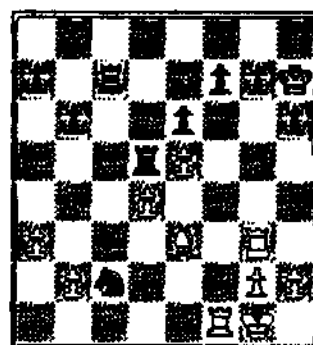


Diagram 3

Membership Drive Continues

Membership has increased to 20 (at press time). We are still beating the bushes for new members. This month, the SCC sent flyers to all area USCF members who have not received any newsletters or other communications from us up to this point.

We would like to continue sending the *Observer* to all area chess players. Unfortunately, postage is expensive. Henceforth, only SCC members will receive the *Observer*. Check your mailing label. If it is typed in red, then this will be your last newsletter! Join the SCC to continue receiving the *Observer*! There is a membership form on the inside back page of the newsletter.

Let us also welcome new member Chris Robinson, who, on his first three visits to the SCC, produced some very impressive results, including a 4-3 score against 1850-rated David Long and a draw against master-rated David Mote.

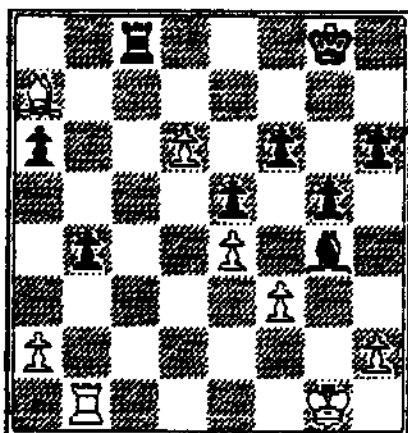
December 27: A Chad-Free SCC Election

The chess club voted 6-0 to make Gerald Bungardner's position of temporary vice president into a permanent one. The club also voted 6-1 to make Tom Knoedler the acting president in the continued absence of Andy Skaar, said absence reportedly to continue through 2001.

Attendance at the meeting was 9 - the highest in many months. That figure was matched January 10. The B&N meeting on January 12 drew 21 people, including 6 new people interested in chess. Our reorganization project must be working! Keep coming to meetings!

Take On Gerald's Computer

by Gerald Bungardner



My computer is playing itself.
Try to figure out the rest
of the game. It is black's move
in the position shown at left.

Announcement

In the March-April issue, and periodically thereafter, the club membership roster will appear in the newsletter. If any member has any objection to his address or telephone number being printed, they must let me know before press time (March 15).

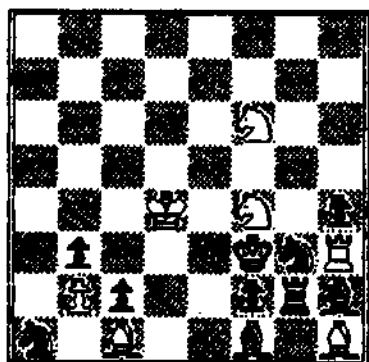
Proposed: Springfield vs Jacksonville

A non-rated inter-club match against the Jacksonville club is a distinct possibility. Though no plans have yet been made, there are people from both cities interested in holding a match.

Jacksonville's club has a tradition of holding non-rated tournaments, such as its own club championship - something we ought to try here in Springfield.

On other proposed matches: Some discussion has been made, and some ideas kicked around, about the proposed exhibition match with the Eldorado, Ill., college chess club. As yet, however, it has been much talk and no action; we have heard nothing from Eldorado. If anything develops, it'll be in the next issue.

Let us continue to consider matches with the other clubs of central Illinois (Peoria, Bloomington, etc.) which are also far closer than Eldorado.



WHITE TO PLAY AND MATE IN 14
Reprinted from "Uncastled King" newsletter

14. RKN, mate!
10. K-N7 11. K-R6 12. K-N5 13. KXP
6. K-B7 7. K-Q8 8. K-K7 9. K-B8
the light squared bishop; 5. K-N8
lose a tempo, without being checked by
3. K-R7 4. K-R8! The white king must
and forth. Therefore: 1. K-B5 2. K-R6
little the dark-squared bishop back
ALSO: As it stands, Black can only

Out Of Town

Springfieldians David Long and Ed Boyd went to Columbia, Ill., on January 1 to play in the annual New Year's Day tournament there. David scored 1 point out of 3 in the open section, while Ed went 2-for-3 in the under-1500 section.

David also represented Springfield at the January 13 tournament in Peoria, where he went 3-for-4.

Meetings

The SCC meets Wednesday nights, 6 to 10 p.m., at the American Legion Post 32, between 5th and 6th Streets, half a block south of Capitol Ave., downtown.

On the second Friday of each month, we meet from 6 to 10 p.m. at Barnes and Noble, near the corner of Route 4 and Wabash Ave.

Area Tournament Schedule

January 21. Vilpren Open. Mt. Vernon, Ill.
February 3. First Saturday of Even Months. St. Louis, Mo.
February 17. **SPRINGFIELD WINTER TOURNAMENT.** Springfield, Ill.
March 3. Edwardsville Swiss. Edwardsville, Ill.

Complete Results - December 9, 2000

2 tied for 1st-2nd:
Richard Kujoth, Terry Trippe.

4 tied for top class C/D:
Scott Schmidt, Frederik Ohles,
Greg Moses, Pete Karagianis.

Top Class E:
Evan Lagouros.

Top Unrated:
Joey Oscepinski.

Name	rtng	rd 1	rd 2	rd 3	rd 4	TOT
1 Kujoth, Richard.....	1900	W 20	W 5	W 4	D 2	3.5
2 Trippe, Terry.....	1738	W 7	W 10	W 12	D 1	3.5
3 Karagianis, Pete.....	1549	W 18	W 11	W 13	L 4	3.0
4 Moses, Greg.....	1435	W 14	W 6	L 1	W 3	3.0
5 Ohles, Frederik.....	1302	W 21	L 1	W 16	W 12	3.0
6 Schmidt, Scott.....	1288	W 22	L 4	W 17	W 13	3.0
7 Lagouros, Evan.....	1018	L 2	W 28	W 19	W 11	3.0
8 Long, David.....	1847	H---	H---	H---	W 19	2.5
9 Little, Jonathan.....	1367	W 15	L 13	W 20	H---	2.5
10 Kelly, James.....	1337	W 28	L 2	W 18	H---	2.5
11 Barnes, James.....	1248	W 23	L 3	W 22	L 7	2.0
12 Bennett, Jerry.....	1146	W 24	W 19	L 2	L 5	2.0
13 Eilering, David C.....	1101	W 17	W 9	L 3	L 6	2.0
14 Schweickert, Steve.....	982	L 4	L 22	W 28	W 21	2.0
15 Tilton, Noah.....	900	L 9	L 17	W 23	W 22	2.0
16 Fieser, Justin.....	894	L 19	W 24	L 5	W 20	2.0
17 Oscepinski, Joey.....	unr.	L 13	W 15	L 6	W 28	2.0
18 Wiedman, David.....	1005	L 3	W 23	L 10	H---	1.5
19 Parker, Robert.....	1360	W 16	L 12	L 7	L 8	1.0
20 McNeil, Steve.....	1064	L 1	W 21	L 9	L 16	1.0
21 Vignone, Justin A.....	628	L 5	L 20	W 24	L 14	1.0
22 Fleming, Mike.....	598	L 6	W 14	L 11	L 15	1.0
23 Tibbs, Joseph.....	unr.	L 11	L 18	L 15	D 24	0.5
24 Lyons, Joe.....	unr.	L 12	L 16	L 21	D 23	0.5
25 Pappas, Bryan.....	1500	U---	U---	U---	U---	0.0
26 Sobkowiak, Chris.....	719	U---	U---	U---	U---	0.0
27 Grigalonas, Dustin.....	694	U---	U---	U---	U---	0.0
28 Francisco, Dan.....	686	L 10	L 7	L 14	L 17	0.0
29 Spalding, Alex J.....	638	U---	U---	U---	U---	0.0
30 Witczak, Kerry.....	566	U---	U---	U---	U---	0.0
31 Main, Michael E E.....	unr.	U---	U---	U---	U---	0.0
32 Kalata, Adam.....	unr.	U---	U---	U---	U---	0.0

-----CUT HERE-----

Membership Form

Annual Dues: \$12

NAME: _____

Make checks payable to
Springfield Chess Club

ADDRESS: _____

CITY/STATE/ZIP: _____

Mail to:
Springfield Chess Club
David Long, Treasurer
Box 7423

PHONE: (_____) _____

USCF ID# (if any): _____

Springfield, Ill. 62791