



Chess Club Observer

Newsletter of the Springfield Chess Club

November 2003

Vol. 6, No. 6

President: Tom Kroedler
Vice President: Michael Shores
Secretary: Gerald Bungardner
Treasurer: David Long
Publicity: vacant

Editor: David Long
2021 1/2 S. 4th St.
Springfield, Ill. 62703

Club Champion: Doug Van Buskirk

Bourgerie, Healy Win Tournament

Fourteen chess players attended the David "Leptomani" Braunfeld Birthday Tournament on October 11, although Leptomani himself had to work and was absent. James Healy, of Springfield, and Dennis Bourgerie, of Normal, tied for first place. They each scored 3 out of 4.

There was a three-way tie for the class A-B prize. Martin Wilber, of Arlington Heights; Jonathan Bonwell, of Normal; and Gary Blickhan, of Quincy, each scored 2.5 points out of 4. The clear winner of the C-D prize was Gordon Scott, of Jackson, Miss., who scored 2 points.

Evan Donosheff, of Springfield, scored half a point and took the class E & under prize. Daunte Carter, also of Springfield, scored 2 points in his first rated tournament and took the unrated prize.

For complete results, see page 3.

Illinois Class Starts On Black Friday!

The ILLINOIS CLASS CHAMPIONSHIPS begin Friday, November 28, and run through Sunday, November 30.

ENTER TODAY!!! This is the first state tournament in a very long time held outside the Chicago area. Don't miss out! There is an entry form on the last page of the newsletter. Early registration (received before Nov. 22) cuts 29% off the cost of entering the tournament!

There will be a special seventh newsletter published in early December about the Illinois Class. (That's why this newsletter is "November" and not "November-December".)

The 2003 Illinois Class Championship is dedicated to the memory of three-time SCC champion David Mate, who died on October 11. See page 2.

Next Regular Tournament December 13

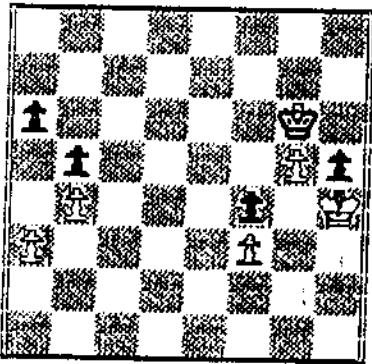
Our next regular tournament will be held Saturday, December 13, at the Signature Inn. All tournament details are the same as usual: registration ends at 8:45, the first round begins at 9, entry fee \$15 in advance or \$18 at the door, \$2 more for non-SCC members.

David Mote - 1959-2003

Former SCC Champion David Mote, of Springfield, died Saturday, October 11, 2003, at the age of 44.

David has held the title of chess master since 1985 and is a three-time SCC champion. He has won a number of chess tournaments in the area. He worked for the federal public defender's office.

White: David Mote (2255)
 Black: Bill Naff (2105)
 Chicago, Ill. - March 7, 1997
 Opening: [261] Smith-Morra Gambit



1. P-K4 P-QB4 2. P-Q4 PxP 3. P-QB3 PxP
4. NxP N-QB3 5. N-B3 P-Q3 6. B-QB4 P-QR3
7. O-O N-B3 8. P-KR3 Q-B2 9. Q-K2 P-K3
10. B-B4 B-K2 11. KR-Q1 O-O 12. P-K5 PxP
13. NxP B-Q3 14. RxB QxR 15. N-N6 Q-B4
16. NxR QxN 17. R-Q1 P-K4 18. BxKP NxB
19. QxN P-QN4 20. B-N3 R-R2 21. R-Q3 R-Q2
22. R-N3 R-Q3 23. N-Q5 NxN 24. BxN B-K3
25. RXPch! QxR 26. QxR BxB 27. Q-QBch! An in-between move,
 preventing any counterplay for Black. Q-B1 28. QxB Q-QB1 29. Q-Q4
 Q-B3 30. P-KR4 Q-Q3 31. P-R3 P-B3 32. P-R5 K-N2 33. P-KN3 K-R3
34. P-KN4 P-B4 35. Q-B4ch K-N2 36. P-N5 K-N1 37. Q-N8ch K-N2
38. Q-B7ch K-N1 39. Q-Q8ch K-N2 40. Q-B7ch K-N1 That's two...
41. Q-Q8ch K-N2 42. Q-Q4ch K-B2 43. Q-R7ch K-N1 44. Q-K3 Q-B2
45. P-R6 Q-Q2 46. Q-QB3 Q-Q8ch 47. K-N2 Q-N5ch 48. Q-N3 Q-K5ch
49. Q-B3 Q-K4 50. P-N4 K-B2 51. Q-B6 Q-Q5 52. Q-N7ch K-N3
53. Q-KN7ch QxQ Finally, the queens come off 54. PxQ KxP/2 55. K-N3
 P-R3 56. K-B4 P-KR4 57. K-N3 K-N3 58. K-R4 P-B5 59. P-B3, Black
 resigns. It's zugzwang! See diagram.

White: G.M. Sergey Kudrin (2623)
 Black: David Mote (2246)
 Chicago, Ill. - May 23, 1998
 Opening: [254] Sicilian Defense

1. P-K4 P-QB4 2. N-KB3 P-Q3 3. P-Q4 PxP 4. NxP N-KB3 5. N-QB3
 P-QR3 6. P-QR4 P-K4 7. N-B3 Q-B2 8. B-KN5 QN-Q2 9. N-Q2 B-K2
10. B-QB4 P-R3 11. B-R4 P-KN4 12. B-N3 N-B1 13. P-R4 P-N5
14. P-KR5 B-K3 15. Q-K2 R-B1 16. B-N3 N/1-Q2 17. P-B3 R-KN1
18. P-B4 BxB 19. NxB N-B4 20. NxN QxN 21. PxP PxP Both sides'
 kingside pawn structures leave something to be desired. 22. O-O-O Q-B5
23. QxQ RxQ 24. BxP NxB 25. KR-K1 NxN 26. BxN R-B3 27. R-K4
 R-K3 28. R-QB4 R-QB3 29. R-/4-Q4 R-KN4 30. R-Q7 P-N4 31. R-N7
 R/4-QB4 32. R-Q4 PxP 33. RxNP B-N4ch 34. K-N1 P-R6 35. R-K4ch
 R-K3 36. R-Q4 R-B1 37. R/4-Q7 R-K2 38. RxRch BxR 39. R-N6 PxP
40. KxP B-N4 41. B-N7 P-R4 42. BxP BxB 43. RxB K-K2 44. R-QR6
 R-KN1 45. RxP RxP 46. K-N3 R-R7 47. P-B4 K-Q3 48. K-N4 P-B3
49. R-Q5ch K-K3 50. K-B5 P-B4 51. P-R6 P-B5 Passed pawns must be
 pushed! 52. K-B6 P-B6, drawn.

White: David Mote (2270)
 Black: Hector Hernandez (2000)
 Peoria, Ill. - March 3, 1996
 Opening: [220] Pirc Defense

1. P-K4 P-Q3 2. P-Q4 P-KN3 3. P-QB4 B-N2 4. N-QB3 N-KB3 5. P-B3
- 0-0 6. B-K3 P-N3 7. Q-Q2 P-B4 8. B-Q3 PXP 9. BXP N-B3 10. B-K3
- B-N2 11. KN-K2 N-K4 12. 0-0 NxB No more bad bishop. 13. QxN N-Q2
14. P-QN3 R-B1 15. KR-Q1 N-B4 16. Q-Q2 P-B4!?
17. PXP RXP
18. QR-B1 Q-Q2 19. P-QN4 N-R3 20. N-QN5 B-R1 21. B-Q4 R/1-KB1
22. BxB KxB 23. N/2-Q4 R/4-B3 24. P-QR3 P-R3 25. R-B3 K-R2
26. R-K3 N-N1 27. N-B3 N-R3 28. Q-K2 R/1-B2 29. N-Q5 BxN 30. PxB
- N-B2 31. N-K6 K-N1 32. Q-B4 N-K1 33. Q-B6 Qx0 34. PxQ RxN
35. RxR R-N2 36. P-QR4 N-B2 37. R-K2 P-Q4 38. P-N5 R-B2
39. R-Q4 K-B1 40. P-R5 R-B3 41. PXP PXP 42. R-R2 K-B2 43. R-QN4
- R-Q3 44. R-R7, Black resigns.

Complete Results, October 11, 2003

1st-2nd place: Dennis Bourgerie, James Healy
 1st A-B: Martin Wilber, Jonathan Bonwell, Gary Blickhan
 1st C-D: Gordon Scott 1st E/Funder: Evan Dorosheff
 1st unrated: Daunte Carter

Rank	Name	Rating	Rd 1	Rd 2	Rd 3	Rd 4	Total
1	Dennis Bourgerie	1700	D-12	W-5	HALF	W-2	3.0
2	James Healy	1679	W-9	W-3	W-6	L-1	3.0
3	Martin Wilber	1694	W-7	L-2	W-12	D-5	2.5
4	Jonathan Bonwell	1687	W-13	L-6	D-7	W-11	2.5
5	Gary Blickhan	1616	W-8	L-1	W-9	D-3	2.5
6	Doug Van Buskirk	2144	W-11	W-4	L-2	----	2.0
7	Gordon Scott	1500	L-3	W-9	D-5	D-9	2.0
8	Daunte Carter	unr.	L-5	W-13	L-11	W-14	2.0
9	Matthew Wilber	1313	L-2	W-11	L-5	D-7	1.5
10	Leonard Ferguson	1647	W-14	----	----	----	1.0
11	Randy Ryner	1519	L-6	L-9	W-8	L-4	1.0
12	Tom Kroedler	1500	D-1	HALF	L-3	----	1.0
13	Larry Coulter	1366	L-4	L-8	D-14	HALF	1.0
14	Evan Dorosheff	598	L-10	L-7	D-13	L-8	0.5

2004 Officers Nominated

President Tom Kroedler, Vice President Michael Shores, Secretary Gerald Bungardner, and Treasurer David Long were all renominated without opposition in the special November 5 meeting. Matt Cremeens was also nominated unopposed to the position of publicity director, which was vacated by James Ruth's resignation last month.

Since all nominees were unopposed, a motion to elect them by default carried 8-0. The club election which had been scheduled for December 3 is hereby **canceled** .

Minor Event News

All minor events will begin at 7:30 p.m. unless otherwise specified.

<u>Date</u>	<u>Event</u>	<u>Entry Fee</u>
November 12	Blitz Tournament, Part 9	\$2
November 19	Caro Kann Defense Thematic	\$3
December 10	Blitz Tournament, Part 10	\$2
December 17	Alapin Opening Thematic	\$3

September 10 Blitz

C A N C E L E D

October 15 Blitz

<u>Pl#</u>	<u>Name</u>	<u>1</u>	<u>2</u>	<u>3</u>	<u>4</u>	<u>Month</u>	<u>Year</u>
1	Leonard Ferguson	x	W	L	L	1.0	1.0
2	Evan Dorosheff	L	x	L	L	0.0	11.5
3	Tom Knoedler	W	W	x	L	2.0	45.5
4	Daunte Carter	W	W	W	x	3.0	29.5

Cumulative Blitz Standings

1	Tom Knoedler	45.5 (57)	79.8	10	Josh Rohrscheib	11.0	(18)	61.1
2	James Ruth	32.5 (54)	60.2	11	Michael Shores	8.0	(25)	32.0
3	David Long	32.0 (42)	76.2	12	Kyle Churchill	6.5	(50)	13.0
4	Daunte Carter	29.5 (39)	75.6	13	John Taylor	4.5	(43)	10.5
5	Matt Cremeens	27.0 (36)	75.0	14	Barney Bruzetti	3.0	(20)	15.0
6	Cole Taylor	17.5 (50)	35.0	15	Michael Grounds	2.0	(9)	22.2
7	Gerald Bumgardner	17.0 (22)	77.3	16	Leonard Ferguson	1.0	(3)	33.3
8	David Braunfeld	14.5 (27)	53.7	17	Gaylon Richards Sr.	1.0	(4)	25.0
9	Evan Dorosheff	11.5 (25)	46.0	18	Gaylon Richards Jr.	0.0	(4)	0.0

September 17 - English Opening Thematic

<u>Pl#</u>	<u>Name</u>	<u>1</u>	<u>2</u>	<u>3</u>	<u>4</u>	<u>5</u>	<u>6</u>	<u>Total</u>	<u>Victories</u>
1	Evan Dorosheff	x	L	L	D	W	L	1.5	<u>by Color:</u>
2	Cole Taylor	W	x	L	L	L	L	1.0	White: 6
3	Gerald Bumgardner	W	W	x	W	W	L	4.0	Black: 8
4	Daunte Carter	D	W	L	x	L	L	1.5	Draws: 1
5	Michael Shores	L	W	L	W	x	L	2.0	
6	Tom Knoedler	W	W	W	W	W	x	3.0	

October 22 - Caro Kann Defense Thematic

P O S T P O N E D

Gerald Bumgardner's proposed "master game thematic" will start in January. Watch the newsletter for details.

Capablanca: Hey!, wasn't Humphrey Bogart in that Movie?

By Big Tuna

First let us introduce the players who played this featured game. Playing the white pieces is the former world champion Jose Raul Capablanca (1888-1942). Capablanca learned to play at age four. At age 13 he defeated the Cuban national champion in informal match play. Educated in New York he spent a great deal of time spanking the masters at the Manhattan Chess Club. His positional and endgame skills had no equal. His ability to crush great masters of tactics also demonstrated his understanding of complex positions. He lost only one tournament game in 10 years and finally in 1921 when Lasker could no longer duck Capa's challenges for the title, Capablanca took the title without losing a single match game. He held the title until 1927 when he lost his match with Alekhine.

Playing the black pieces is Savielly Tartakower (1887-1956). He was born in Russia and moved to Vienna. He later settled in Paris. He established himself as a very strong player before the first world war. His chess strength peaked in the 1920s. He was probably one of the 10 strongest players in the world throughout the 1920s and 1930s. He is well known as a specialist of unorthodox openings. His tendency to play strange openings cost several unnecessary losses but his chess had soul. Personally I liken him to a 1920s version of Tony Miles. He was a fine chess author. His annotated game collection books are very good. He wrote with good analysis and humor.

This game was played at the extremely strong New York tournament in 1924. Capablanca plays one of the most instructive and brilliant endings in chess history. As brilliantly played this game was it failed to win first brilliancy at the tournament. That is how strong this

tournament was.

Capablanca v. Tartakower
- 1924 New York

1. d4 e6
2. Nf3 f5
3. c4 Nf6
4. Bg5 Be7
5. Nc3 O-O
6. e3 b6
7. Bd3 Bb7

We have a Dutch Defense. At this time Tartakower was probably the world's foremost authority on the Dutch. Something I admire in Capablanca's play is the simplicity in his opening play. He seems to avoid theoretical challenges to his opponents' openings. He just makes solid sensible moves. In my humble opinion and amazement he repeatedly throughout his career cast away white's first move advantage and played into dead equal positions from where he would proceed to spank his opponents severely. Don't waste too much of your time studying opening books, Capablanca didn't. If you want to study chess then study chess problems and endgames.

8. O-O Qe8

Dutch 101. ...Qe8 is a very common move in most Dutch systems. Black seeks K-Side attack. If allowed Qh5 followed by Ng4 is a common theme. Sometimes Qe8 will be used to support ...e5, which can be preceded by ...d6. Remember, ideally black's goal in the Dutch defense with ...f5 is to get in ...e5 and use the e6 pawn duo to attack white's king position.

9. Qe2! Ne4
10. O-O dxc4
11. bxc3 Qxe7
12. a4!?

White's Q-side pawns are weak so he intends to loosen black's superior Q-side structure and trade off some of his weaknesses. Also 12.a4 prevents ...Qa3.

12. ... Bxf3
13. Qxf3 Nc6
14. Rfb1 Rae8
15. Qh3 Rf6
16. f4 Na5
17. Qf3 d5
18. Re1 Qd7?!

No! IMO 18. ...e5 is Black's only move here. Remember Dutch 101.

19. e4 fxe4
20. Qxe4 g6
21. g3 Kf8
22. Kg2 Rf7
23. h4 d5
24. cxd5 exd5

25. Qxe8+ Qxe8
26. Rxe8+ Kxe8
27. h5 Rf6
28. hxg6 hxg6

White's c pawn is weak, but so is black's g pawn. Bottom-line, it is easier for white to create a K-side passer than it is for black to create a Q-side passer. Now it is time for white to GET REALLY ACTIVE on the king-side. Number 1 rule in rook endings is KEEP YOUR ROOK ACTIVE! The more active rook is worth at least a pawn, maybe more! Its time white gets aggressive rather than worrying about defending his Q-side.

29. Rh1 Kf8
30. Rh7 Rc6
31. g4 Nc4
32. g5

"Threatens Rh6 followed by f5, and against it there is nothing to be done" (A. Alekhine)

32. ... Ne3+
33. Kf3 Nf5
34. Bfx5

Now Capa transitions to a rook ending. This is the easiest way to win because, he has the MOST ACTIVE ROOK!

34. ... gxf5
35. Kg3!

White sacs material to obtain the win position with King on f6 and pawn on g6!

35. ... Rxc3+
36. Kh4 Rf3
37. g6!

Makes a path for the King to get to f6!

37. ... Rxf4+
38. Kg5 Re4
39. Kf6!

Important rook ending lesson. White doesn't take the f5 pawn because he needs it to shield his king against checks from the black rook.

39. ... Kg8
40. Rg7+ Kh8
41. Rxc7 Re8

White threatens 42.Re8++. Therefore Black's rook has to become inactive. Number 1 rule in rook endings is KEEP YOUR ROOK ACTIVE!

42. Kxf5

Now takes the pawn removing any counter chances.

43. ... Re4
43. Kf6 Rf4+
44. Ke5 Rg4
45. g7+ Kg8
46. Bxa7 Rg1
47. Kxd5 Rcl
48. Kd6 Rc2

49. d5 Rc1
50. Rc7 Ra1
51. Kc6 Rxa4
52. d6 1-0

Points to remember from this game are:

1) Don't fear your opponent's opening.

Do not be afraid if your opponent knows a lot more about an opening than you do. Well, unless your opponent on board number one who has the black pieces plays 1.e4 e6 2.d4 f5. If that happens then be afraid, be very afraid! Just kidding, but if that does happen don't take it lightly and good luck. Tartakower knew a lot more about the Dutch than Capablanca. For that matter Tartakower knew a lot more about all openings than Capablanca. Capablanca just played solid sensible moves. If you play solid sensible moves you also should get a playable position. Then you can play to win the game with skills and knowledge you have gained through your study of tactics and endgames. Don't waste too much time reading opening manuals.

2) An Endgame is not a middlegame. This is true but...

It is often touted in endgame books that the endgame is not the same as a middlegame. This in no way means that initiative, piece activity and mating attacks are not part of the endgame. Sometimes it is correct to sac material to achieve mating attacks in the endgame.

3) Keep your Rook active!

If you are up pawns but your rook is not active you may get spanked anyway! Rook activity is more important than material. (This is true to a certain extent. We have to be reasonable about these things)

4) J.R. Capablanca was very good at chess.

Some notes about Rook Endings and Life.

1) Keep the Rook active!

2) Accept that in life some days you're the pigeon, and some days you're the statue.

3) Stronger the piece the worse it is as a Blockader. The rook is a lousy blockader. Keep the rook active!

4) Always keep your words soft and sweet, just in case you have to eat them.

5) A more active rook in a Rook ending is usually worth at least a pawn. Keep the rook active!

6) Always read stuff that will make you look good if you die in the middle of it.

7) Rook endings are the punishment you face for failing to find your mate in fours during the middlegame. Study tactics!

8) Always drive carefully. It's not only cars that can be recalled by their maker.

9) Rooks are long range pieces. They often belong far from the center so they can't be attacked or shut out. Keep the rook active!

10) The early worm gets eaten by the bird, so sleep late..

11) Rooks normally belong behind the passed pawn, whether its yours or your opponents.

12) If you can't be kind to someone, at least have the decency to be vague.

13) During rook endings, In general the side with the most pawns should strive to keep them on the board to increase his chances of creating a passed pawn. The player with fewer pawns should strive for as many pawn exchanges as possible.

14) If you lend someone \$20, and never see that person again, it was probably worth it.

15) In rook endings the player with fewest pawns should strive for positions with pawns only on one side of the board.

16) In life, it may be that your sole purpose is simply to

serve as a warning to others.

17) Remember you can use your enemy's pawns to shield your king from checks from his rook

18) Never buy a car you can't push.

19) About half of your chess games will be rook endings. If you want to study ending but don't know where to start maybe rook endings will be a good place.

20) Never put both feet in your mouth at the same time, because then you don't have a leg to stand on.

21) I prefer to start endgame study with elementary mates then king and pawn endings and build from there.

22) Nobody cares if you can't dance well. Just get up and dance.

23) King and pawn endings are chess mechanics at their most basic level. These principles apply to successful methods of rook ending play. Rook endings can liquidate to King and pawn endings. This is why approach them first even though most endings are rook endings.

24) Eat a live toad in the morning and nothing worse will happen to you for the rest of the day, even a rook ending isn't as bad as eating a live toad.

25) Rook endings are the most common but also the trickiest.

26) In life, when everything's coming your way, you're in the wrong lane.

27) KEEP THE ROOK ACTIVE!

28) Birthdays are good for you; the more you have, the longer you live.

29) Remember a man self-worth is in no way related whatsoever to his chess rating.

30) You don't stop playing because you get old. You get old because you stop playing. So play chess!

Check and mate!

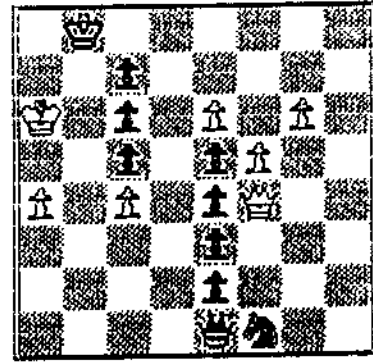
BT

Absurdity, Part 13

White to play and draw.

By Korolkov and Nitrofanov, 1957

White looks like he can give checkmate in 2 moves, starting with 1. P-K7 or 1. P-N7, but Black threatens 1...Q-R4ch!! 2. KxQ K-N2!, followed by 3...P-K8=Q mate or 3...N-Q7 and mate on either QN6 or QB5. White cannot prevent this sacrifice. So you will have to think of something else. For a hint, see the bottom of this page. Solution on page 8!



Inmate wants to play chess by mail.

Write to: Glenn Reyes
657553-TC-3-20
Wynne Unit
Huntsville, Tex. 77349

For Sale

- | | |
|--|-------|
| White Wicker Vanity. | \$50 |
| 2 drawers & mirror. Excellent cond. Ideal for teen-age girl. | |
| Antique Oak Dresser. | \$75 |
| Solid oak. 4 drawers. Needs refinishing. | |
| Couch. | \$95 |
| With hide-a-bed. Neutral colors. | |
| Desk. | \$20 |
| 3 drawers, wooden, Formica top. Great for art. | |
| Table & 5 Chairs. | \$175 |
| Antique Willet gateleg dropleaf table and leaves. All solid maple.
Needs refinishing. | |
| Mattress. | \$10 |
| Kiddie-sized (28x52 inches.) Excellent condition. | |
| Inline skates. | \$25 |
| Size 7. Good condition. | |

528-9958

ABSURDITY HINT: Black is not the only one capable of sacking his queen.

Absurdity Solution

White begins 1. QxP/5!, threatening mate on KR8. Black plays his sacrifice 1...Q-R4ch!! 2. KxQ K-N2 3. Q-N2ch! K-R2 4. Q-N8ch!! White sacrifices to get the kings back where they started. 4. QxP?? N-Q7 and Black wins. 4...KxQ 5. K-R6 P-K8=Q 6. P-N7! 5. P-K7?? Q-R4ch! 7. KxQ K-N2 8. P-K8=Q P-K7 9. Q-N8ch KxQ 10. K-R6 P-K8=Q 11. P-N7 Q-N6! 12. P-B6 Q-N3 and Black wins. In the position, 6...Q-N6 allows 7. P-K7 and White wins. 6...Q-R4ch! 7. KxQ K-N2 8. P-N8=Q P-K7 9. Q-QR8ch! KxQ 10. K-R6 P-K8=Q 11. P-K7 Q-R4ch! 12. KxQ K-N2 13. P-K8=Q N-Q7 Black has no more queens to toss off, but the knight still threatens mate. 14. Q-QR8ch!! KxQ 14. Q-QN8ch?? KxQ 15. K-R6 K-B1 and Black's king catches the pawn. 15. K-R6 NxP 16. P-B6! N-Q3 16. P-R5?? N-K4 17. P-B6 N-Q2 18. P-B7 N-N1, mate. 17. P-B7 NxP 18. P-R5, any move, stalemate.

Meetings

The SCC meets Wednesday nights, 6 to 10 p.m., at the American Legion Post 32, between 5th and 6th Streets, half a block south of Capitol Ave., downtown. *Every week until further notice, we will be meeting in room 207, upstairs (not the room we have usually used.)*

On the second Friday of each month, we meet from 6 to 10 p.m. at Barnes and Noble, near the corner of Route 4 and Wabash Ave.

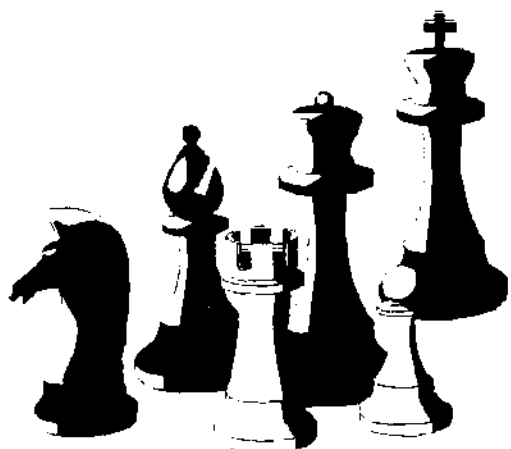
Area Tournament Schedule

<u>Date</u>	<u>City</u>	<u>Reg Ends</u>	<u>Contact</u>	<u>Phone</u>
November 15	Collinsville, Ill.	8:45	Paul Holland	(618) 288-4117
November 22	(Rural) Normal, Ill.	9:45	Dennis Bourgerie	(309) 454-3842
November 22	Florissant, Mo.	9:30	Al Howlett	(314) 387-5127
Nov. 28-30	Springfield, Ill.	4 p.m. 11/28	Tom Knoedler	(217) 523-7265
December 13	Springfield, Ill.	8:45	Tom Knoedler	(217) 523-7265
January 1	Columbia, Ill. (?)			
January 3	Normal, Ill.	8:45	Dennis Bourgerie	(309) 454-3842
Jan. 23/24-25	Chesterfield, Mo.	*	Continental Chess	(545) 496-9658

* 3-day schedule: registration ends Friday 7 p.m.

2-day schedule: registration ends Saturday 10 a.m.

The Springfield Chess Club
is pleased to present to you



Illinois Class Championship

November 28, 29, and 30, 2003
An ICA Maxi-Tour and Ex-Urban Tour event.

5-SS, G/2, \$4000 b/100. 6 sections: Master/Expert 500-300-200; Class A, B, C, D, and E & under each 300-200-100. Unrateds may play in any section but may not win more than \$50 except in master/expert section. EF: \$49 if received by 11/22, \$69 thereafter. Play up one section for \$5 extra. ICA membership required, \$18, OSA.

Signature Inn, 3090 Stevenson Drive (immed. West of I-55, exit 94), Springfield. Reservations, (217) 529-6611. . HR: \$62 + tax, must mention chess tournament, must reserve by 11/22.

Schedule: Registration Friday 1-4 p.m. Rounds Friday 5 p.m., Saturday 8:30- 1:15- 6:00, Sunday 10 a.m. Awards at 2:30 p.m. One half-point bye available any round except 5th.

Ent/Info: Thomas Knoedler, 2104 S. 4th St., Springfield 62703. (217) 206-6056 days, (217) 523-7265 evenings, except Wednesday. Info only: David Long, (217) 522-0489. Bring Boards, sets, and clocks—none provided. NS/NC/W.

Illinois Class Championships Entry Form

Name: _____

Address: _____

City/State/Zip: _____

USCF#: _____ Expiration: _____ Rating: _____

Half point bye? (rds. 1-4, limit 1) Round _____

If you are rated, do you want to play up one section (for \$5 extra?) Yes No

If you are unrated, which section do you want to play in?

M/X A B C D E&under

Unrated players may not win more than \$50 except in M/X section.

ICA membership is required of all Illinoisans.

USCF membership is required of all participants.

Entry fee: \$49 before November 22* \$ 49.00

Playing up fee (\$5) _____

Other (memberships, etc.) _____

Total enclosed: _____

Mail to: Thomas Knoedler, 2104 South 4th St., Springfield, Ill. 62703

Make checks payable to Springfield Chess Club

*\$69 thereafter