



Chess Club Observer

Newsletter of the Springfield Chess Club

July-August 2005 -- Vol. 8, No. 4

President: Tom Knoedler

Vice President: Leonard Ferguson

Secretary: Robert Soucie

Treasurer: David Long

Publicity Director: Matt Cremeens

Newsletter Editor: David Long

Club Champion: Matt Cremeens

Pete Karigianis Wins June Tournament

The June 11 tournament drew 16 chess players to town. Pete Karigianis, of Ankeny, Iowa, swept the field with a perfect score of 4-0. He won first place. His first opponent, Cesar Nunez, of Bloomington, won the rest of his games to take second place with a score of 3 points.

There was a five-way tie for the A-B prize. Tom Knoedler, and Matt Cremeens, both of Springfield; Gary Blickhan, of Quincy; Dennis Bourgerie, of Normal; and Jason Chien, of Bloomington, each scored 2½ points. Jeremy Vollmer, of St. Louis; and Brad Schlosser, of Chesterfield, Mo. each scored 1½ points, which split the C-D prize.

Evan Dorosheff, of Springfield, also scored 1½ points and took the E-and-under prize. Carl Dolson, hometown unavailable, scored 2 points and won the unrated prize.

Complete results of the tournament are on page 5.

Regional Tournament Approaching!

On August 13-14, the Springfield Chess Club will host the First Annual Land of Lincoln Open in Hopedale, Ill., between Lincoln and Morton, about 50 miles north of Springfield. We would like to see as many SCC members there as possible! Remember that the standard club discount of \$2 off entry fee at SCC-sponsored tournaments also applies to larger events! See page 6 for more information about the tournament.

To get to the tournament, take I-55 north from Springfield to Exit 127 (I-155) outside Lincoln. Take I-155 north to Exit 19 (Illinois 122) for Hopedale. Turn right (east) and go two miles to Hopedale. Turn right at the sign that points to "Business District" and drive to the bottom of the water tower. For more detailed directions, see Matt. The tournament is being held in the Community Room.

The SCC will not be holding a "regular" tournament in August. The next regular one-day tournament will be held on October 15.

Member news

The SCC will miss Don and Evan Dorosheff, who are probably moving to Greenview this summer. They will not be so far away that they will not be able to make it to chess club once a month or so, though.

Minor Events

All minor events will begin at 7:30 p.m. unless otherwise specified.

Blitz dates: July 13, August 17, September 14 (\$2 entry fee)

3-Round Swiss dates: July 20, August 24, September 21 (\$3 entry fee)

May 11 Blitz

<u>Pl #</u>	<u>Name</u>					<u>Month</u>	<u>Year</u>
1	James Ruth	x	L	W	W	2	4
2	Tom Knoedler	W	x	L	L	1	11
3	Evan Dorosheff	L	W	x	W	2	11
4	Leonard Ferguson	L	W	L	x	1	5

June 15 Blitz

<u>Pl #</u>	<u>Name</u>						<u>Month</u>	<u>Year</u>
1	Evan Dorosheff	x	W	L	L	W	-	2 13
2	James Ruth	L	x	L	L	L	W	0 4
3	Joe Rottman	W	W	x	W	W	-	4 4
4	Matt Cremeens	W	W	L	x	W	-	3 17
5	Tom Knoedler	L	W	L	L	x	-	1 12
6	Michael Shores	-	L	-	-	-	x	- 0

James Ruth vs. Michael Shores game voided because Michael Shores withdrew before completing half of his games.

Cumulative Blitz Standings

<u>Rank</u>	<u>Name</u>	<u>Score</u>	<u>Pos</u>	<u>Pct</u>	<u>Rank</u>	<u>Name</u>	<u>Score</u>	<u>Pos</u>	<u>Pct</u>
1	Matt Cremeens	17.0	22	77.3	7	Jared Silsby	3.5	7	50.0
2	Evan Dorosheff	13.0	22	61.1	8	Jake Surratt	2.0	7	28.6
3	Tom Knoedler	12.0	25	52.4	9	Robert Soucie	2.0	12	16.7
4	David Long	7.5	10	75.0	10	James Ruth	2.0	14	14.3
5	Leonard Ferguson	5.0	11	45.5	11	Jay Hawks	1.0	5	20.0
6	Joe Rottman	4.0	4	100.0					

May 18 3-Round Swiss

CANCELED

June 22 3-Round Swiss

CANCELED

Absurdity, Part 23

Two old puzzles and one not so old. Answers at the bottom of page 5.

Part 1: Place five queens on a chessboard so that all 64 squares are defended. (Remember that a queen does not defend the square on which it stands.)

Part 2: Place eight queens on a chessboard so that no queen defends another. (This is hard!)

Part 3: How many queens of the same color can you put on a chessboard so that none attacks another? Careful now!

Membership Roster

Membership: 34 – Last update: June 22, 2005.

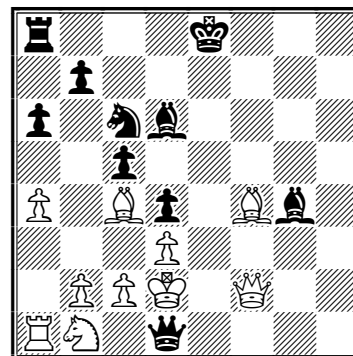
State is Illinois and area code is 217 unless otherwise specified.

Name	Address	City	Phone
-------------	----------------	-------------	--------------

Games

Wayne Zimmerle, of Peoria, is fond of unusual openings, but here he plays a mainstream opening against Chicago-area master Jon Burgess. Superior piece development mixed with just a little weird opening play can be very effective!

White: Jon Burgess (2244)
Black: Wayne Zimmerle (1718)
Opening: [269] Closed Sicilian
Bloomington, Ill., May 14, 2005, Round 4

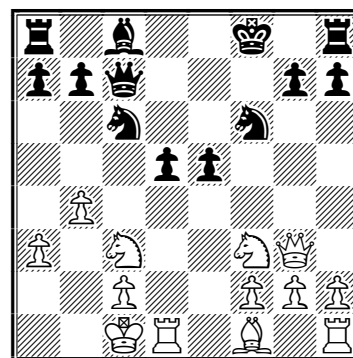


1. P-K4 P-QB4
2. N-QB3 P-K3
3. P-B4 P-QR3
4. P-QR4 P-Q4
5. N-B3 P-Q5
6. N-QN1 N-QB3
7. B-B4 N-B3
8. P-Q3 B-K2
9. 0-0 N-KN5
10. Q-K2 P-KR4
11. P-R3 N-R3
12. N-N5 B-Q2
13. QxP P-KN3
14. Q-K2 Q-B2
15. P-B5 NPxP

16. PxP NxP 17. RxN PxR 18. NxP RxP?! Black decided not to play ...R-KB1, chasing the white pieces back, instead throwing everything he can at the white king, which is looking somewhat vulnerable with the queenside pieces undeveloped! 19. PxR Q-N6ch 20. K-B1 P-B5 Opening up the bishops. 21. Q-B2 BxPch 22. K-K2 B-N5ch 23. K-K1 Q-R6 24. N-Q6ch BxN 25. BxBP? This costs white a piece, but there may not be anything better! Q-R8ch 26. K-Q2?? Q-Q8, checkmate.

This one is from the Chicago Open, the wildest of my games, all of which were wild to some degree! (I ended up with 6 points out of 7!)

White: David Long (1985)
Black: Warren Harper (1866)
Opening: [275] Winawer French
Chicago, Ill., May 29, 2005, Round 5



1. P-K4 P-K3
 2. P-Q4 P-Q4
 3. N-QB3 B-N5
 4. P-K5 P-QB4
 5. P-QR3 B-R4!?
- I have sometimes seen this variation while playing on FICS, but never in a tournament until now!
6. P-QN4 PxQP
 7. QxP (An immediate Q-N4 may have been better.)
 8. N-B3 N-QB3
 9. Q-N4 K-B1
 10. B-KB4 P-B3
 11. PxP NxBP
 12. BxB QxB
 13. Q-N3 P-K4

Here, ...NxP is a nasty threat, with the twin threats of ...QxNch and ...NxBPch. Right now, his central pawns are adequately defended. If I can just find a way to keep the pressure on them, and maybe end some of his threats as well, I might have a playable position. I thought for 40 minutes on this move, and came up with **14. 0-0-0!?** See the diagram. The king is only marginally safer here than it was in the center, but the move ends the possibility of ...NxP and ...NxBPch; in fact here 14...NxP allows 15. QxKP QxN 16. Q-Q6ch! (16. QxQ? N-R7ch 17. K-N2 NxQ 18. KxN N-K5ch) and 17. QxN. Black also needs to do something about his QP, which is now attacked. He played ...B-B4. Now, the pawn is a lot less

appetizing, because 15. NxQP NxN 16. RxN NxP runs into some hard-to-stop mate threats. However, I can take advantage of the fact that his queen is temporarily undefended to complete my development and end the mate threats. **15. B-Q3 BxB 16. RxB R-B1 17. R-K1 P-K5** It looks like the pawn fork works now, but I have an ace up my sleeve in the form of **18. QxQ RxQ 19. N-KN5 PxR 20. N-K6ch K-B2 21. NxR R-QB1 22. N/7-N5** I opted not to play 22. N/3xP because ...NxN 23. NxN N-Q5 looked unpleasant, although after the game we found that 24. P-B3 would have been fine. Of course, 22. N/7xP? R-Q1 loses at once. Here begins the second phase of defense, which my opponent referred to during postgame analysis as the “rickety knight chain”. ...K-N3 **23. N-Q6 R-B2 24. R-K3 PxP 25. R-N3ch K-R4 26. P-B4 N-Q5** Now, suddenly it is the black king in danger of being checkmated. **27. N/6-N5 NxN 28. NxN R-B5** The only move that keeps the rook on the QB file and, since it threatens the white KBP, ends the mate threat. **29. R-N5ch K-R5** Giving black a chance to fall asleep and play 29...K-R3, after which 30. N-Q6, with twin mate threats, costs him his rook – or his king! 30...RxBP 31. N-B7 is still checkmate. Forcing the king to move forward also tactically protects the KBP for the moment. **30. RxNP N-K5 31. RxRPch K-N5 32. R-QB7 N-B7 33. RxR N-Q6ch** Black’s knight arrives on this square a move too late. **34. KxP PxR 35. P-N3 P-R3 36. N-Q4 K-R6 37. K-B3 P-N4** The king move has another point: on this square, it will be impossible for the black knight to check it in less than three moves. **38. P-B5 KxRP 39. P-B6 N-K4 40. N-B3ch, Black resigns.** If the king was still on QB2, this trick would not work because 40...NxN 41. P-B7 N-Q5ch! 42. K-B3 N-K3 stops the pawn. 43. P-N4 K-N6 44. P-KN5 still wins, but it takes longer.

Complete Results, June 11, 2005

Rank	Name	Rating	Rd 1	Rd 2	Rd 3	Rd 4	Total
1	Pete Karigianis	2180	W2	W9	W6	W8	4.0
2	Cesar Nunez	1583	L1	W15	W12	W9	3.0
3	Dennis Bourgerie	1700	D14	W13	D4	Half	2.5
4	Gary Blickhan	1681	W12	D7	D3	Half	2.5
5	Matt Cremeens	1675	D13	D14	W11	D6	2.5
6	Jason Chien	1630	W16	W8	L1	D5	2.5
7	Thomas Knoedler	1621	W10	D4	L8	W13	2.5
8	Kyle Miles	1767	W11	L6	W7	L1	2.0
9	Bruce Michel	1648	W15	L1	W14	L2	2.0
10	Carl Dolson	unr.	L7	L12	W16	W14	2.0
11	Brad Schlosser	1473	L8	W16	L5	D12	1.5
12	Jeffrey Vollmer	1209	L4	W10	L2	D11	1.5
13	Evan Dorosheff	1187	D5	L3	W15	L7	1.5
14	David Bononi	1465	D3	D5	L9	L10	1.0
15	Peyton Russell House	770	L9	L2	L13	W16	1.0
16	Quinn Vollmer	406	L6	L11	L10	L15	0.0

Absurdity Solution

Part 1: One solution is h1, f3, e4, d5, b7.

Part 2: One solution is a6, b4, c1, d5, e8, f2, g7, h3.

Part 3: 64 queens. They are the same color, and do not attack each other!

Meetings

The SCC meets Wednesday nights, from 6 to 10 p.m., at the American Legion Post 32, between 5th and 6th Streets, half a block south of Capitol Ave., downtown.

On the second Friday of each month, we meet from 6 to 10 p.m. in the café section of Barnes & Noble, near the corner of Route 4 and Wabash Ave.

Area Tournament Schedule

<u>Date</u>	<u>City</u>	<u>Reg Ends</u>	<u>Contact</u>	<u>Phone</u>
Aug. 13-14	Hopedale, Ill.	9:30	David Long	(217) 522-0489
Aug. 26-28	Chesterfield, Mo.		US Chess Federation	
Sept. 10	Peoria, Ill.	8:45	Fred Malcome	(309) 367-4833

First Annual Land of Lincoln Open

Saturday and Sunday, August 13-14, 2005
Hopedale Community Room, Hopedale, Illinois
located between Lincoln and Morton along I-155
in Tazewell County, central Illinois

5-SS, G/110. Registration Saturday 8-9:45
Rounds: Saturday 10, 2, 6; Sunday 10, 2.

Prize fund: \$\$1,200 b/40 - 1st-3rd \$250-200-150
Class X, A, B, C, D, E&under \$80 each
Unrated \$70, Biggest upset \$50

Entry fee: \$29 if received by 8/10, **\$39** at the door.

AN ICA MAXI-TOUR & EX-URBAN EVENT

Boxed lunches available on request.

Motels 10 miles away in Morton, Ill.

Send advance entries to Thomas Knoedler, 2104 South 4th St, Springfield 62703.
(217) 523-7265