



# Chess Club Observer

Newsletter of the Springfield Chess Club

Summer 2017-- Vol. 20, No. 3

President: Leonard Ferguson  
Vice President: Tom Knoedler  
Secretary: Garald Bumgardner

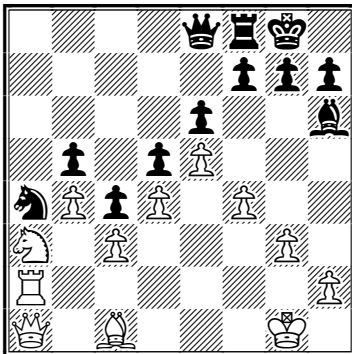
Treasurer: David Long  
Publicity Director: Jimmie Cecil  
<http://www.springfieldchessclub.com>

## SCC to celebrate National Chess Day Oct. 14

The Springfield Chess Club will celebrate "National Chess Day" with our next regular tournament. This will take place on Saturday, October 14, at Douglas United Methodist Church. The tournament will follow our usual schedule of 4 games with a time limit of G/60 (with a 5 second delay, if using a delay clock). Registration ends at 9:45; rounds are at 10, 12:45, 3, and 5:15, with a lunch break after round 1. Prize fund is \$400 based on a turnout of 30 players.

If you qualified for a free entry to a 2017 tournament during last year's membership drive, this event will most likely be your last opportunity to take advantage of it!

National Chess Day started with a declaration by President Ford in 1976.



Here is a game from one of our tournaments. This is Dave Sculley playing against Coy Summers.

1 P-K4 P-QB3 2 P-Q4 P-Q4 3 P-K5 B-B4 4 B-Q3 BxB  
5 QxB P-K3 6 N-KB3 P-QB4 7 0-0 N-QB3 8 P-QR3  
P-QR3 9 QN-Q2 P-B5 10 Q-K3 KN-K2 11 P-QN3 P-QN4  
12 B-N2 N-B4 13 Q-K2 B-K2 14 P-QR4 R-R2 15 RPxP  
RPxP 16 RxR NxR 17 R-R1 Q-B2 18 P-B3 0-0 19 P-QN4  
N-B1 20 Q-K1 B-Q1 21 R-R8 N-N3 22 R-R2 N-R5  
23 Q-R1 B-K2 24 B-B1 Q-Q1 25 N-N1 N-R5 26 NxN BxN  
27 P-N3 B-N4 28 P-B4 B-R3 29 N-R3 Q-K1 (diagram)  
30 NxNP QxN 31 RxN Q-N1 32 R-R6 Q-K1 33 Q-R5  
P-N3 34 B-R3 Q-Q1 35 P-N5 QxQ 36 RxQ R-N1  
37 B-B5 B-B1 38 B-R7 R-N2 39 P-N6 B-K2 40 R-N5 B-R6 41 K-N2 B-B8 42 R-B5  
B-Q7 43 R-B7 BxP 44 RxR BxP 45 R-B7 P-B6 46 RxQBP BxNP 47 BxB K-N2  
48 B-Q8 K-R3 49 B-B6 K-R4 50 R-B7 K-N5 51 P-R3ch K-B4 52 K-B3, Black resigns.

**Come join us!** The Springfield Chess Club meets weekly on Wednesday evenings, from 6:30 to 9:00 p.m., at the White Oaks Mall food court. We also meet on the second and fourth Friday of each month, at the café section of Barnes and Noble. Both locations are near the corner of Route 4 and Wabash Ave.

SCC memberships expire on December 31 (regular) or June 30 (scholastic). If your membership is expiring (check your mailing label), please renew today! To renew, return this stub and a check payable to Springfield Chess Club to: Springfield Chess Club, c/o David Long, 401 S. Illinois St., Springfield, Ill. 62704.

New members, please use the full page forms available at: [www.springfieldchessclub.com/join.htm](http://www.springfieldchessclub.com/join.htm).

Name: \_\_\_\_\_  \$8 Regular  \$5 Scholastic

Write any changes to your contact information below. If no changes since last year, check here →