



# Chess Club Observer

Newsletter of the Springfield Chess Club

Summer 2020 -- Vol. 23, No. 3

President: Leonard Ferguson  
Vice President: Tom Knoedler  
Secretary: Garald Bumgardner

Treasurer: David Long  
Publicity Director: Jimmie Cecil  
<http://www.springfieldchessclub.com>

## Club Meetings Still Suspended

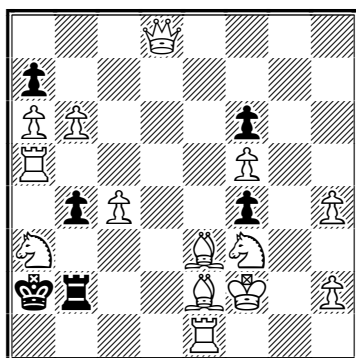
Even as Illinois reopens from its epidemic-induced shutdown, social gatherings are still banned or discouraged at our meeting sites (to say nothing of being foolhardy), so club meetings remain suspended for the time being.

## But Some Club Activity Continues

The epidemic hasn't shut us down entirely! In May, Jimmie Cecil set up a "virtual SCC" so that we can have **virtual chess club meetings on chess.com**. To participate, look for us at: <https://www.chess.com/club/springfield-chess-club-1> on the days and times that would ordinarily be a regular meeting. For further information, contact Jimmie.

Additionally, our scholastic director (also our club president) Leonard Ferguson is still offering chess lessons, on Zoom for the time being. To ask about details, rates, and availability, email him at macfergus2 (at) comcast (dot) net.

## Another Chess Puzzle



A 1986 chess puzzle by M. Kirtley. White is to *selfmate* in 8 moves – that is, *force* Black to give checkmate, while Black tries to avoid checkmating White.

**Hint:** Go home!

**Solution:** 1 N-QN1 dis ch K-N6 2 Q-Q1ch R-B7  
3 B-QB1 PxP 4 R-QR1 P-N4 5 R-KR1 PxP  
6 K-K1 P-QB6 7 N-N1 P-B6 8 B-B1 P-KB7, mate.

-----  
SCC memberships expire on December 31 (regular) or June 30 (scholastic). If your membership is expiring (check your mailing label), please renew today! To renew, return this stub and a check payable to Springfield Chess Club to: Springfield Chess Club, c/o David Long, 401 S. Illinois St., Springfield, Ill. 62704.

New members, please use the full page forms available at: [www.springfieldchessclub.com/join.htm](http://www.springfieldchessclub.com/join.htm).

Name: \_\_\_\_\_  \$8 Regular  \$5 Scholastic

Write any changes to your contact information below. If no changes since last year, check here →