



Chess Club Observer

Newsletter of the Springfield Chess Club

Autumn 2020 -- Vol. 23, No. 4

President: Leonard Ferguson
Vice President: Tom Knoedler
Secretary: Garald Bumgardner

Treasurer: David Long
Publicity Director: Jimmie Cecil
<http://www.springfieldchessclub.com>

Annual Business Meeting Held on Internet

As the corona virus epidemic continues, the club's meetings remain suspended, and we are holding our annual business meeting online this year, using the SCC's forum. The thread is located at: <http://www.springfieldchessclub.com/phpBB3/viewtopic.php?f=3&t=151>.

The SCC's annual business meeting began with the Board meeting, conducted via emails from November 15-21. The Board has voted to:

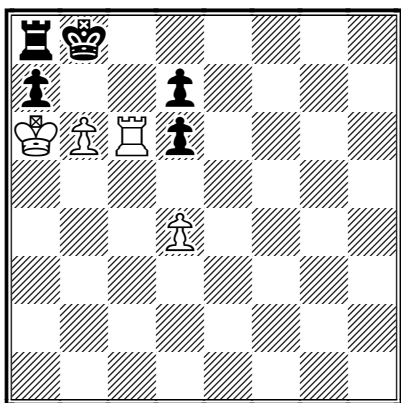
- Renominate all sitting club officers for re-election for next year.
- Charge no dues for 2021, and extend all current members' memberships by one year.

The meeting is now open to the entire membership. To post, you will have to log in with your SCC Forum account first. If you need to register for an account, the system will ask you for a passcode (to deter registration by spam bots). Use [redacted] as the anti-spam passcode. Registration and use of the forum is free of charge. You do not have to use your real name to register, but if you do not, please sign your posts in the annual business meeting thread.

Online Meetings Continue

The Springfield Chess Club is still holding virtual meetings on chess.com. To participate, look for us at: <https://www.chess.com/club/springfield-chess-club-1> on the days and times that would ordinarily be a regular meeting. For further information, contact Jimmie.

For information about chess lessons, held on Zoom for the time being, contact Leonard.



Another Chess Puzzle

Here is another chess puzzle from the internet.
White to play and win!

Solution: 1 R-B8ch KxR 2 P-N7ch K-N1 (if K-B2, then 3 PxR=Q with a trivial win) 3 P-Q5! K-B2 4 PxR=B! (promoting to a queen or rook is stalemate; a knight would be quickly trapped with nothing gained) K-N1 5 B-N7 K-B2 6 KxP K-Q1 7 K-N8 K-K1 8 K-B7 K-K2 9 B-R8 K-K1 10 KxP/6 K-Q1 11 B-B6 PxP (if king moves instead, then 12 BxPch and the pawn will queen soon) 12 PxP K-B1 13 P-B7 K-N2 14 K-Q7 and wins.