



Chess Club Observer

Newsletter of the Springfield Chess Club
Spring 2022 -- Vol. 25, No. 2

President: Leonard Ferguson
Vice President: Yuan Wen
Secretary: Josh Turner

Treasurer: David Long
Publicity Director: Jimmie Cecil
<http://www.springfieldchessclub.com>

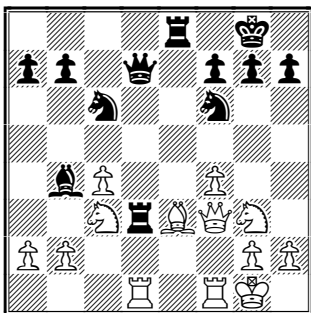
Next Tournament June 18

It's about time! After a coronavirus-induced hiatus of over two years, the club is happy to announce its next tournament, to be held on Saturday, June 18. We will be using a **new location**, the Southern View Village Hall, at 3410 South 5th St.

The tournament will be four rounds, with a time limit of G/60; d/5 if using delay. Round times are 10, 1, 3:15, and 5:30. Registration ends at 9:45, and a lunch break follows round 1. Prize fund is \$400 based on 30 paid entrants. Entry fee is \$17 in advance, \$20 at the door, with a \$2 discount given to SCC members.

Welcome New Members

Audra Von De Bur, of Southern View, and Ben Von Behren, of Blue Mound, have joined the Springfield Chess Club. Welcome to the club! Membership now stands at 21.



Enjoy this tactical melee from a 1997 game. Play continued: **18. N-Q5!** Protects everything and the black rook is hanging. ...**N-Q5!** **19. Q-B2 N-N5** He's tenacious! **20. RxR NxQ** **21. RxN/Q4** White has only a rook and piece for the queen, but black has two hanging pieces and a tactical threat to his own queen. ...**N-R6ch** **22. PxN QxP** **23. NxB** Suddenly white has a rook and *three* pieces for the queen, and his bishop is safe because of the threat of back rank mate. ...**P-KN4** **24. N-Q5 K-N2** **25. PxP P-QR4** **26. N-B5ch K-B1** **27. R-R4** Black's queen is trapped, so he resigned here.

Come join us! The Springfield Chess Club meets weekly on Wednesday evenings, 5-7 p.m. at the White Oaks Mall food court, on the second Monday of each month, 6-7:45 p.m. in the multipurpose room at Lincoln Library, and on the third Friday of each month, 6:30-8:30 p.m. at Harvest Market in West White Oaks Plaza. Meetings are canceled on holidays when the hosting facility is closed. At other times, try the online Springfield Chess Club at <https://www.chess.com/club/springfield-chess-club-1>.

SCC memberships expire on December 31 (regular) or June 30 (scholastic). If your membership is expiring (check your mailing label), please renew today! To renew, return this stub and a check payable to Springfield Chess Club to:

Springfield Chess Club, c/o David Long, 401 S. Illinois St., Springfield, Ill. 62704.

New members, please use the full page forms available at: www.springfieldchessclub.com/join.htm.

Name: _____ \$12 Regular \$5 Scholastic

Write any changes to your contact information below. If no changes since last year, check here →